

# Safari PRIDE BY

**SOLIAN**



+254 711 082 500 | [www.solian.co.ke](http://www.solian.co.ke)



## **SAFARI PRIDE BY SOLIAN**

**Safari** is a Swahili word meaning '**journey**' and was originally from Arabic '**Safar** ' meaning to journey'. As we say, in this life, we are all on a journey. SOLIAN, we have walked this journey, from a one project to a leading players in the real estate sector.

SOLIAN has created housing solutions in Kenya through development of

- gated communities
- affordable housing
- hospitality grade-housing units and,
- commercial spaces.

SOLIAN has now transitioned, from selling value-added plots to development of hospitality-grade housing units and playing its part in meeting the growing housing needs in Kenya.

**SAFARI PRIDE**, which is located next to USIU and Safari Park Hotel, on Thika Road, offers to the market 800 affordable housing units. This project marks the culmination of a journey (Safari) Solian has taken since 2010





**SOLIAN** takes pride in this journey and as such offers offers at special market prices, this project-The **SAFARI PRIDE** to commemorate this journey.

**SOLIAN** offers **SAFARI PRIDE** to:-

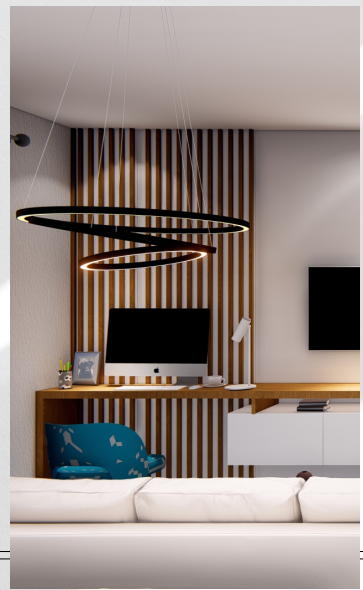
- a. Those starting the journey of life and need an affordable and decent housing unit.
- b. Those wishing to start the investment journey and creating a passive income from rental yielding units either on month to month or furnished and serviced units.
- c. Those who are already on their investment journey. **SAFARI PRIDE** perfectly fits into your continuing investment journey by adding into their growing number of high yielding units.

**SAFARI PRIDE** is a sustainable and green development consisting of **Studio** and **1 BR Apartments** measuring approximately 31 & 51 SqM respectively. With the prices starting at Kes 3.2M & Kes 4.6M respectively and the returns on investments projected above 12%, **SAFARI PRIDE** by Solian is a great bargain!!!

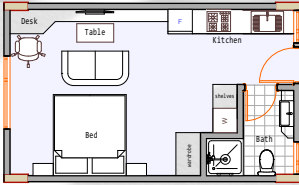
Wherever you are at on your **Safari** in life, Solian invites you to join us as we take the next step on our journey @**SAFARI PRIDE** by **SOLIAN**

**\*\*\*Karibu Twende Safari Pamoja\*\*\***

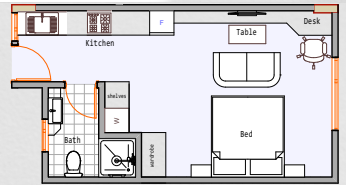




## STUDIO TYPOLOGIES



STUDIO UNIT (TYPE 01)  
Floor Area-31 m2



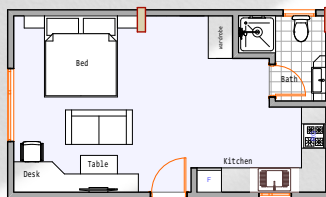
STUDIO UNIT (TYPE 02)  
(Unit floor area)

### STUDIO

**Price:** From Kes 3.0M\*\*

**Payment Plan:**  
30 monthly installments

**Deposit:** 30%

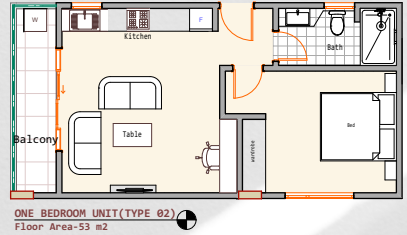
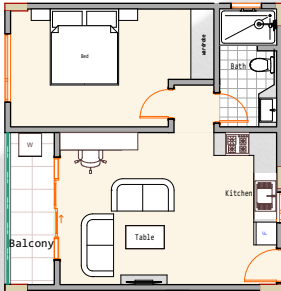


STUDIO UNIT (TYPE 03)  
Floor Area-36 m2





## ONE BEDROOM TYPOLOGIES

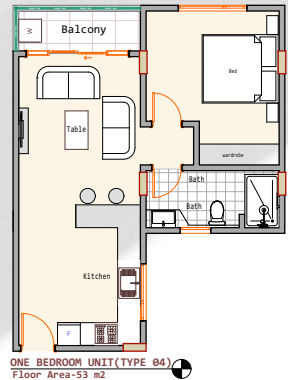
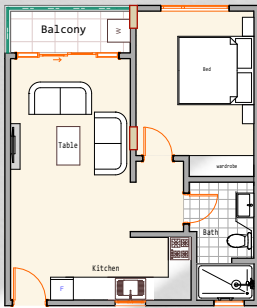


### ONE BEDROOM

**Price: From Kes 4.4M\*\***

**Payment Plan:  
30 monthly installments**

**Deposit: 30%**



# Typical floor Plan



**FURNITURE LAYOUT**  
**BLOCK A** - FLOOR AREA 427.58 m<sup>2</sup>  
**TYPICAL FLOOR PLAN**  
 ONE BEDROOM UNIT - 3 NO.  
 STUDIO UNIT - 6 NO.

**FURNITURE LAYOUT**  
**BLOCK B** - FLOOR AREA 530.00 m<sup>2</sup>  
**TYPICAL FLOOR PLAN**  
 ONE BEDROOM UNIT - 3 NO.  
 STUDIO UNIT - 9 NO.

**FURNITURE LAYOUT**  
**BLOCK C** - FLOOR AREA 585.60 m<sup>2</sup>  
**TYPICAL FLOOR PLAN**  
 ONE BEDROOM UNIT - 4 NO.  
 STUDIO UNIT - 9 NO.

**FURNITURE LAYOUT**  
**BLOCK D** - FLOOR AREA 713.55 m<sup>2</sup>  
**TYPICAL FLOOR PLAN**  
 ONE BEDROOM UNIT - 6 NO.  
 STUDIO UNIT - 9 NO.



**UNIT FLOOR AREAS**  
**BLOCK A** - FLOOR AREA 427.58 m<sup>2</sup>  
**TYPICAL FLOOR PLAN**  
 ONE BEDROOM UNIT - 3 NO.  
 STUDIO UNIT - 6 NO.

**UNIT FLOOR AREAS**  
**BLOCK B** - FLOOR AREA 530.00 m<sup>2</sup>  
**TYPICAL FLOOR PLAN**  
 ONE BEDROOM UNIT - 3 NO.  
 STUDIO UNIT - 9 NO.

**UNIT FLOOR AREAS**  
**BLOCK C** - FLOOR AREA 585.60 m<sup>2</sup>  
**TYPICAL FLOOR PLAN**  
 ONE BEDROOM UNIT - 4 NO.  
 STUDIO UNIT - 9 NO.

**UNIT FLOOR AREAS**  
**BLOCK D** - FLOOR AREA 713.55 m<sup>2</sup>  
**TYPICAL FLOOR PLAN**  
 ONE BEDROOM UNIT - 6 NO.  
 STUDIO UNIT - 9 NO.

# Safari PRIDE

BY

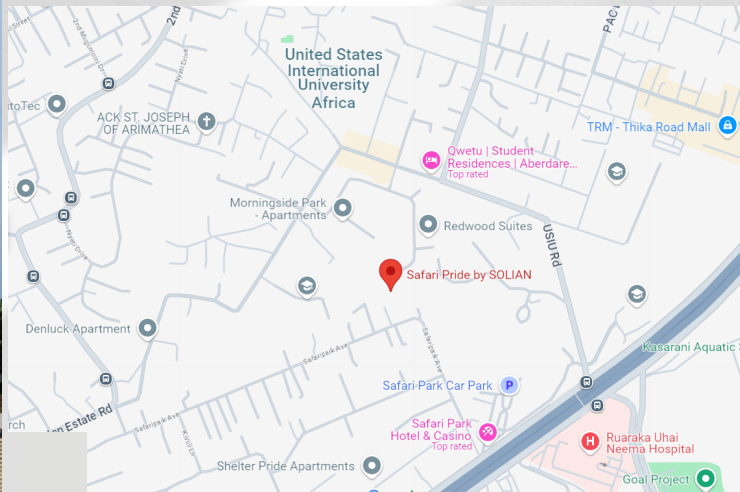
**SOLIAN**®

## LOCATION

### QVGJ + Q63, Nairobi

Our strategic position ensures effortless access to key destinations, providing unparalleled convenience

- 5 minutes walk to USIU University
- 15 minutes drive to KCA University
- Walking distance to Safari Park Hotel
- Approximately 20 min drive from Nairobi CBD
- Less than 15 minutes drive to Aga Khan Hospital
- Approximately 10 minutes drive to Garden City Mall









## CONTACT US

### **MOMBASA OFFICE**

Palm Breeze | 1st floor | Door No. 5  
Links Road, Nyali-Mombasa

### **NAIROBI OFFICE**

Flamingo Towers | 4th floor  
Mara Road, Upper Hill

### **Email**

[info@solian.co.ke](mailto:info@solian.co.ke)

### **Website**

[www.solian.co.ke](http://www.solian.co.ke)

### **Call**

+254711082500